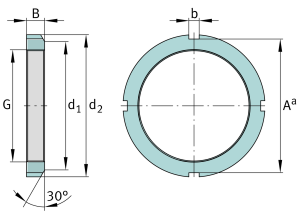


**FAG****KM7**

Locknut

Locknuts KM, main dimensions to DIN 981

Technical information



Main Dimensions & Performance Data

G	M35x1,5	Thread
d ₂	52 mm	Outerside diameter
B	8 mm	Width
≈m	70 g	Weight

Mounting dimensions

d ₁	44 mm	Chamfer diameter
b	5 mm	Width retaining slot
A ^a	48 mm	Groove base distance

Additional information

F	43,000 N	Axial load capacity, static
	MB7	Fuse
	30 °	Chamfer angle