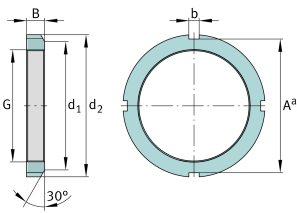
**FAG****KM2**

Locknut

Locknuts KM, main dimensions to DIN 981

## Technical information



### Main Dimensions & Performance Data

G	M15x1	Thread
d <sub>2</sub>	25 mm	Outerside diameter
B	5 mm	Width
≈m	10.6 g	Weight

### Mounting dimensions

d <sub>1</sub>	21 mm	Chamfer diameter
b	4 mm	Width retaining slot
A <sup>a</sup>	21 mm	Groove base distance

### Additional information

F	10,000 N	Axial load capacity, static
	MB2	Fuse
	30 °	Chamfer angle