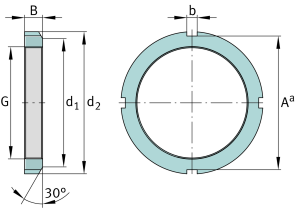
**FAG****KM12**

Locknut

Locknuts KM, main dimensions to DIN 981

Technical information

**Main Dimensions & Performance Data**

G	M60x2	Thread
d ₂	80 mm	Outerside diameter
B	11 mm	Width
≈m	192 g	Weight

Mounting dimensions

d ₁	73 mm	Chamfer diameter
b	7 mm	Width retaining slot
A ^a	74 mm	Groove base distance

Additional information

F	90,000 N	Axial load capacity, static
	MB12	Fuse
	30 °	Chamfer angle