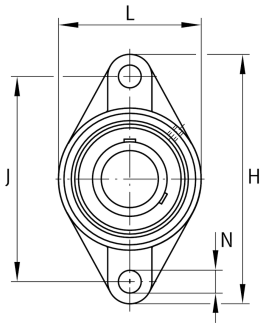


**FAG****UCFL207** [↗](#)

Flanged housing unit

Flanged housing unit UCFL

## Technical information

**Your current product variant**

Material	GG	Grey cast iron
----------	----	----------------

**Main Dimensions & Performance Data**

d	35 mm	Bore diameter
L	90 mm	Flange width
H	161 mm	Height flange
U	44.4 mm	Total height unit
C <sub>r</sub>	27,500 N	Basic dynamic load rating, radial
C <sub>0r</sub>	15,300 N	Basic static load rating, radial
C <sub>ur</sub>	800 N	Fatigue load limit, radial
≈m	1.2 kg	Weight

**Mounting dimensions**

J	130 mm	Distance fixing bore
N	16 mm	Fixing bore
n	2	Number of screwing holes



### Dimensions

A	34 mm	Height housing
A <sub>1</sub>	16 mm	Thickness of flange
A <sub>2</sub>	19 mm	Distance raceway
B	42.9 mm	Width
Q	M6	Connection thread for lubrication

### Additional information

1	Number of housings
FL207	Housing
UC207	Bearing designation

### Temperature range

T <sub>min</sub>	-20 °C	Operating temperature min.
T <sub>max</sub>	120 °C	Operating temperature max.