

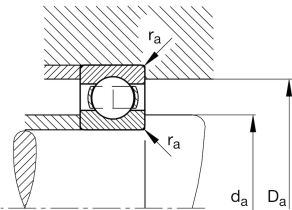
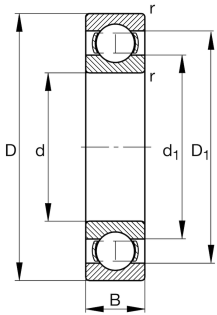
**FAG****6220-N**

Deep groove ball bearing

Deep groove ball bearing 62...-N, single row, ring groove, steel sheet metal cage



Technical information



Your current product variant

Sealing	Without	Not sealed
Design, bearing outer ring	N	Ring groove for snap ring
Cage	JN	Steel sheet metal
Tolerance class	PN	Normal (PN)
Dimensional / heat stabilization	S0	Rings dimensional stabilized up to 150°
Lubricant	Without	Bearing not greased
Radial internal clearance	CN (Group N)	Normal internal clearance
Bore type	Z	Cylindrical

Main Dimensions & Performance Data

d	100 mm	Bore diameter
D	180 mm	Outside diameter
B	34 mm	Width
C _r	130,000 N	Basic dynamic load rating, radial
C _{0r}	93,000 N	Basic static load rating, radial
C _{ur}	5,500 N	Fatigue load limit, radial
n _G	5,000 1/min	Limiting speed
n _{gr}	4,800 1/min	Reference speed
≈m	3.22 kg	Weight



Mounting dimensions

$d_{a \min}$	112 mm	Minimum diameter shaft shoulder
$D_{a \max}$	168 mm	Maximum diameter of housing shoulder
$r_{a \max}$	2.1 mm	Maximum fillet radius

Dimensions

r_{\min}	2.1 mm	Minimum chamfer dimension
D_1	154.94 mm	Shoulder diameter outer ring
d_1	125.08 mm	Shoulder diameter inner ring

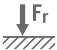
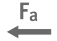




Temperature range

T_{\min}	-30 °C	Operating temperature min.
T_{\max}	150 °C	Operating temperature max.

Calculation factors

f_0	14.4	Calculation factor
-------	------	--------------------

Characteristics

-  Radial load
-  Axial load in one direction
-  Axial load in two directions
-  Grease Lubrication
-  Oil Lubrication
-  Not sealed