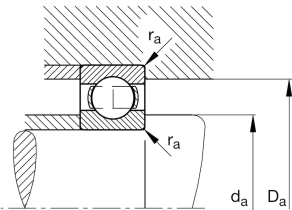
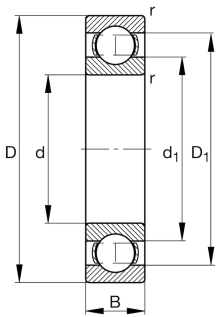


**FAG****6212**

Deep groove ball bearing

Deep groove ball bearing 62, single row, steel sheet metal cage

Technical information



Your current product variant

| | | |
|----------------------------------|--------------|---|
| Sealing | Without | Not sealed |
| Cage | JN | Steel sheet metal |
| Tolerance class | PN | Normal (ISO 492:2023) |
| Dimensional / heat stabilization | S0 | Rings dimensional stabilized up to 150° |
| Lubricant | Without | Bearing not greased |
| Radial internal clearance | CN (Group N) | Normal internal clearance |
| Bore type | Z | Cylindrical |

Main Dimensions & Performance Data

| | | |
|----------|-------------|-----------------------------------|
| d | 60 mm | Bore diameter |
| D | 110 mm | Outside diameter |
| B | 22 mm | Width |
| C_r | 57,000 N | Basic dynamic load rating, radial |
| C_{0r} | 36,500 N | Basic static load rating, radial |
| C_{ur} | 2,550 N | Fatigue load limit, radial |
| n_G | 9,300 1/min | Limiting speed |
| n_{gr} | 6,800 1/min | Reference speed |
| m | 0.767 kg | Weight |



Mounting dimensions

| | | |
|--------------|--------|--------------------------------------|
| $d_{a \min}$ | 69 mm | Minimum diameter shaft shoulder |
| $D_{a \max}$ | 101 mm | Maximum diameter of housing shoulder |
| $r_{a \max}$ | 1.5 mm | Maximum fillet radius |

Dimensions

| | | |
|------------|----------|------------------------------|
| r_{\min} | 1.5 mm | Minimum chamfer dimension |
| D_1 | 95.82 mm | Shoulder diameter outer ring |
| D_2 | 97.68 mm | Caliber diameter outer ring |
| d_1 | 75.75 mm | Shoulder diameter inner ring |

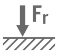





Temperature range

| | | |
|------------|--------|----------------------------|
| T_{\min} | -30 °C | Operating temperature min. |
| T_{\max} | 150 °C | Operating temperature max. |

Calculation factors

| | | |
|-------|------|--------------------|
| f_0 | 14.5 | Calculation factor |
|-------|------|--------------------|

Characteristics

| | |
|---|------------------------------|
|  | Radial load |
|  | Axial load in one direction |
|  | Axial load in two directions |
|  | Grease Lubrication |
|  | Oil Lubrication |
|  | Not sealed |